

Historical Perspective: Ocean Productivity in the 20th Century

John Marra
Brooklyn College

Introduction

ASLO, Boulder, CO, 1987

Obstacles both large and small

The Ocean is Big



Oceanography, Ecology

Phytoplankton are Tiny



Physiology

1940s

Oceanographic, Ecologic Approach to Productivity



Gordon A. Riley

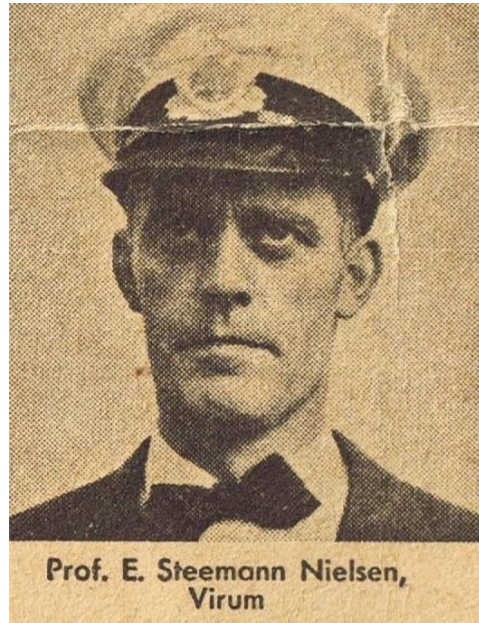
Riley, G. A., H. Stommel, and D. F. Bumpus. **1949.**

“Quantitative Ecology of the Plankton of the Western North Atlantic.” *Bulletin of the Bingham Oceanographic Collection* 12(3): 1–169

A marriage of biological, physical, and chemical dynamics

1950s

Introduction of the C-14 Method

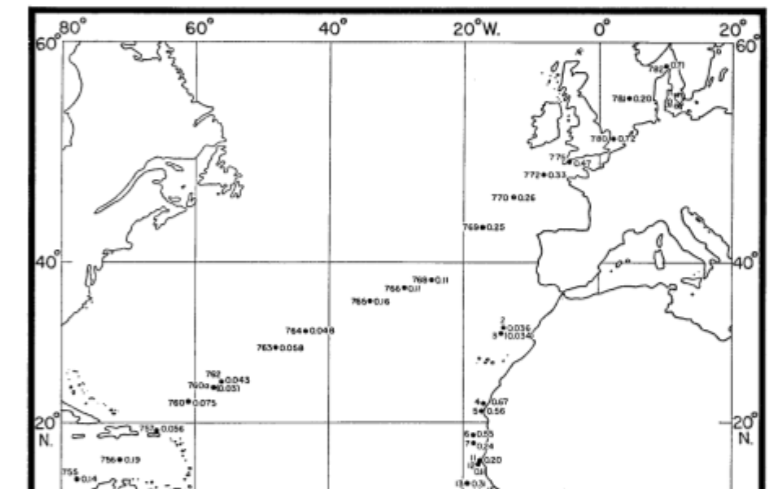


PRIMARY OCEANIC PRODUCTION THE AUTOTROPHIC PRODUCTION OF ORGANIC MATTER IN THE OCEANS

By E. STEEMANN NIELSEN and E. AABYE JENSEN
Copenhagen Vejle

CONTENT

Introduction	50	Part III. The general background of oceanic productivity	91
Part I. The Methods	52	A. Introduction	91
A. General information about the ¹⁴ C-method for measuring organic productivity in the sea	52	B. Supply of nutrient salts	91
B. The determination of the photosynthetic activity of plankton algae	54	1. Nitrate versus phosphate	91
C. Is the amount of organically bound ¹⁴ C a measure of the intensity of photosynthesis?	55	2. The replenishment of nutrients	95
D. The "in situ" method for determining the production per surface unit of the sea	57	3. Concentration of nutrients and rate of organic production in the different oceans	97
E. The "tank" method for determining the production per surface unit of the sea	60	4. Experiments with ocean water to which nutrient salts are added	99
F. The accuracy of the present measurements of the photosynthetic rate in water samples	62	C. Influence of light	100
G. Measurements of the light penetration into the sea	63	1. Experiments on the dependence in marine plankton algae on light intensity	100
H. Limitations and precautions in using the ¹⁴ C-Technique	67	2. The utilization by the algae of the light falling on the sea surface	106
I. Comparison between results obtained by the ¹⁴ C-technique and by other Techniques. The ratio between gross production and net production	68	3. The influence of weather conditions and seasons on the rate of organic productivity	108
Part II. The measurements of organic productivity	70	D. Influence of temperature	109
A. General information	70	E. Influence of sinking and grazing by animals	110
B. The Atlantic Ocean	70	F. The interaction of the factors limiting or controlling the production of organic matter in the sea	112
1. The area off North Africa	71	G. Standing crop of phytoplankton and organic productivity	115
2. The Gulf of Guinea	72	H. Standing crop of zooplankton and organic productivity	117
3. The area outside the Congo-Estuary	72	Appendix 1.	
4. The area north of the Benguela Current proper	73	The influence on the production rate of the filtration of sea water through finest bolting net	120
5. The Benguela Current	74	Appendix 2.	
6. Walvis Bay	75	An attempt to determine the order of magnitude of the sinking velocity of algae, with information on the rate of grazing at the different depths. By K. P. Andersen	121
7. The section across the North Atlantic Ocean	76	References	122
8. A survey of the South Atlantic Ocean	77	Table 20. The observations	125
C. The Indian Ocean	79		
1. The Western part of the ocean	80		
2. The Equatorial part of the ocean	82		
3. The Bay of Bengal	84		
4. The Indo-Malayan Waters	85		
D. The Pacific Ocean	86		
E. The production of organic matter in the hydrosphere as a whole	89		



Decade also marked by dispute between Riley and Steemann Nielsen, between an oceanographic and physiologic approach to productivity

1960s

Global Surveys Using the C-14 Method

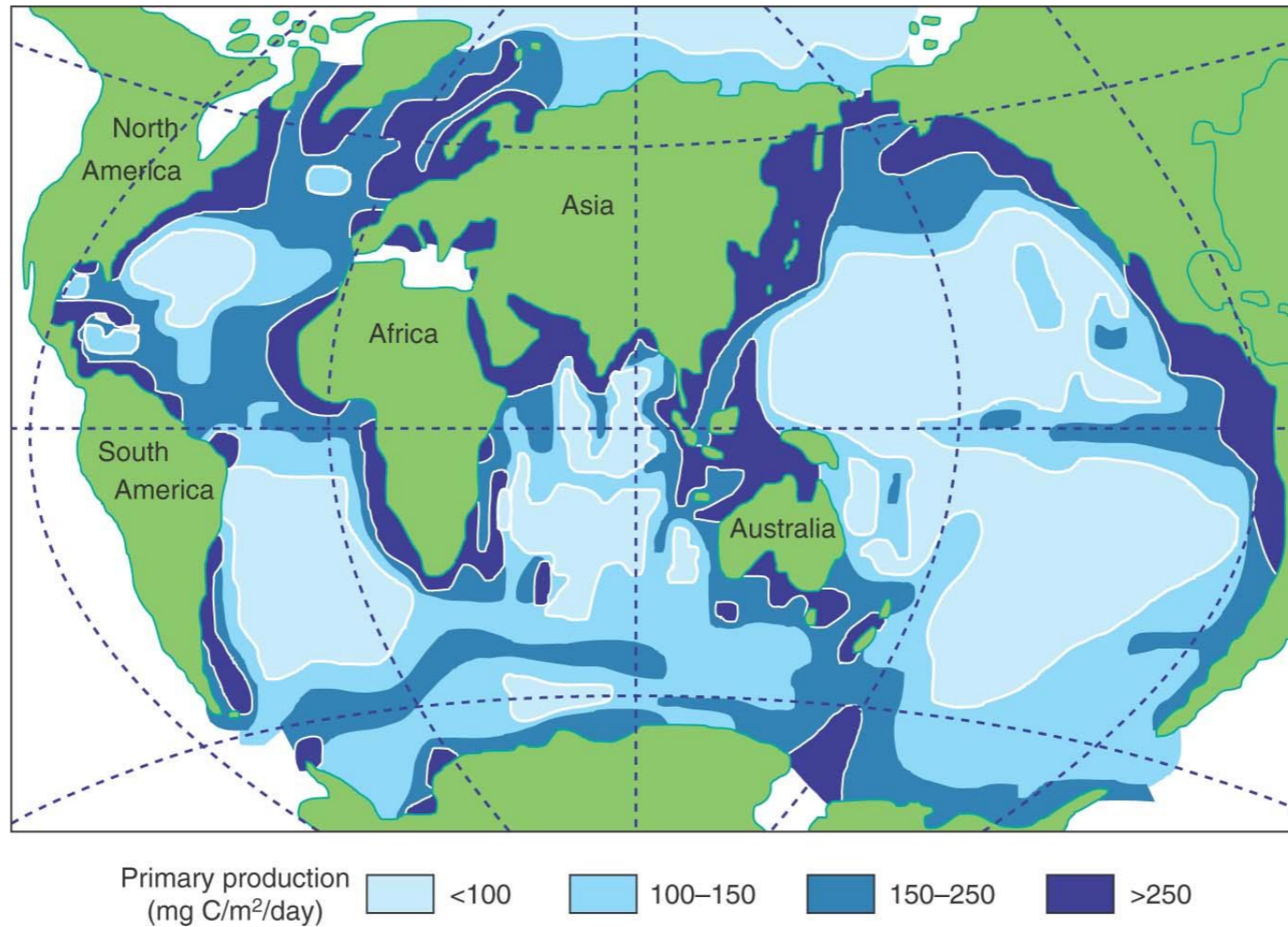


FIG. 10.6 Distribution of primary production in the oceans. (After Koblentz-Mishke et al., 1970.)

1970s

Questions

Oceanography

- Bacterial Respiration too large to be supported by ^{14}C PP
- Rain rate of particles
- Oxygen utilization in the deep ocean implies higher surface PPs than measured
- Fish catches require higher PP

Phytoplankton

- Effects of Incubation?
- Contamination from
 - sampling and samplers?
 - incubation containers?
 - the isotope itself?

(these are difficult to evaluate)

There were other fundamental problems with the C-14 Method

- The method is easy
- Only a positive result (C assimilation) is possible
- Extremely sensitive: it can't be compared to other flux measurements

As a result, you can make lots of measurements, can console yourself by the positive results, and not worry about validation.

1980s

The PRPOOS Project, and Some Resolution



Dick Eppley (with Ed Renger)

“It is difficult to conceive of success at understanding marine ecosystems or chemical cycles in the ocean without accurate knowledge of the rate of primary photosynthetic production, closely tied as it is to the distributions and abundances of nearly all marine organisms and all particle-reactive elements.

“Yet there is currently large uncertainty and abundant debate about this rate brought about by inferred imbalances between measurements of photosynthetic carbon fixation and measurements of consumption or loss elsewhere in the oceanic carbon cycle.”



Did PRPOOS Double Oceanic Productivity?

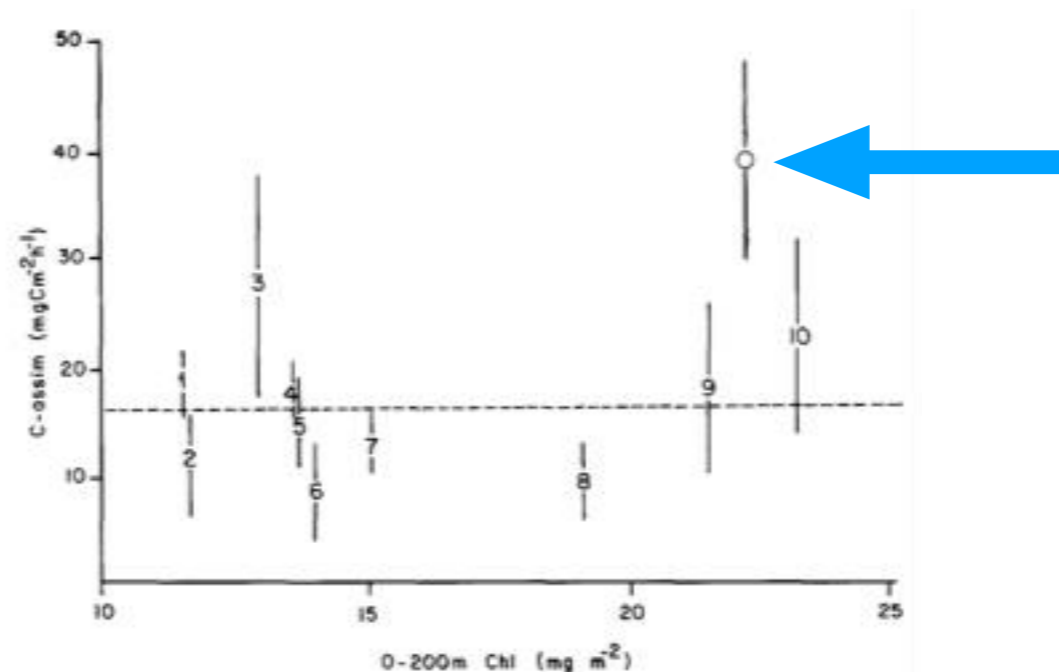


Fig. 1. A comparison of ¹⁴C-derived carbon assimilation (C-assim) values from historical data (1968–1980; HAYWARD *et al.*, 1983) and from the PRPOOS cruise (16 August–8 September 1985) for 28°N/155°W in the North Pacific Central Gyre. These data are plotted against chlorophyll for convenience; error bars are standard deviations. Open circle, PRPOOS data; 1, CLIMAX I (September 1968); 2, ARIES IX (September 1971); 3, CLIMAX II (August 1969); 4, TASA-DAY XI (February 1974); 5, CATO I (June 1972); 6, CLIMAX VII (August 1973); 7, INDOPAC XV (June 1977); 8, SOUTHTOW XIII (February 1973); 9, DRAMAMINE II (May 1974); 10, FIONA (August 1980). For the historical data, the means represent from 3 to 18 experiments per cruise (HAYWARD *et al.*, 1983). The dashed horizontal line is the mean of the historical data. The PRPOOS data is an average of 6 experiments. The lack of trend in this plot is because of the different depths of integration for production and chlorophyll. Chlorophyll is reported (HAYWARD *et al.*, 1983) as an integral to the depth at which it decreases to background concentrations; this occurs at 200 m depth, about twice the depth of the euphotic zone.

arrived at a “canonical” value for the daily rate of C-assimilation under a square meter of ocean surface.

1990s

The Joint Global Ocean Flux Study

- JGOFS
 - biological and chemical oceanography go international
 - establishes protocols for PP and other “core” measurements
- Process Studies: NABE Arabian Sea Exp., EqPac, AESOPS
- Time series: HOT, BATS

A Comparison of Methods: NABE

POC (beam-c) and TCO_2 are measured in the water column

^{14}C assimilation and Net O_2 are measured in incubations

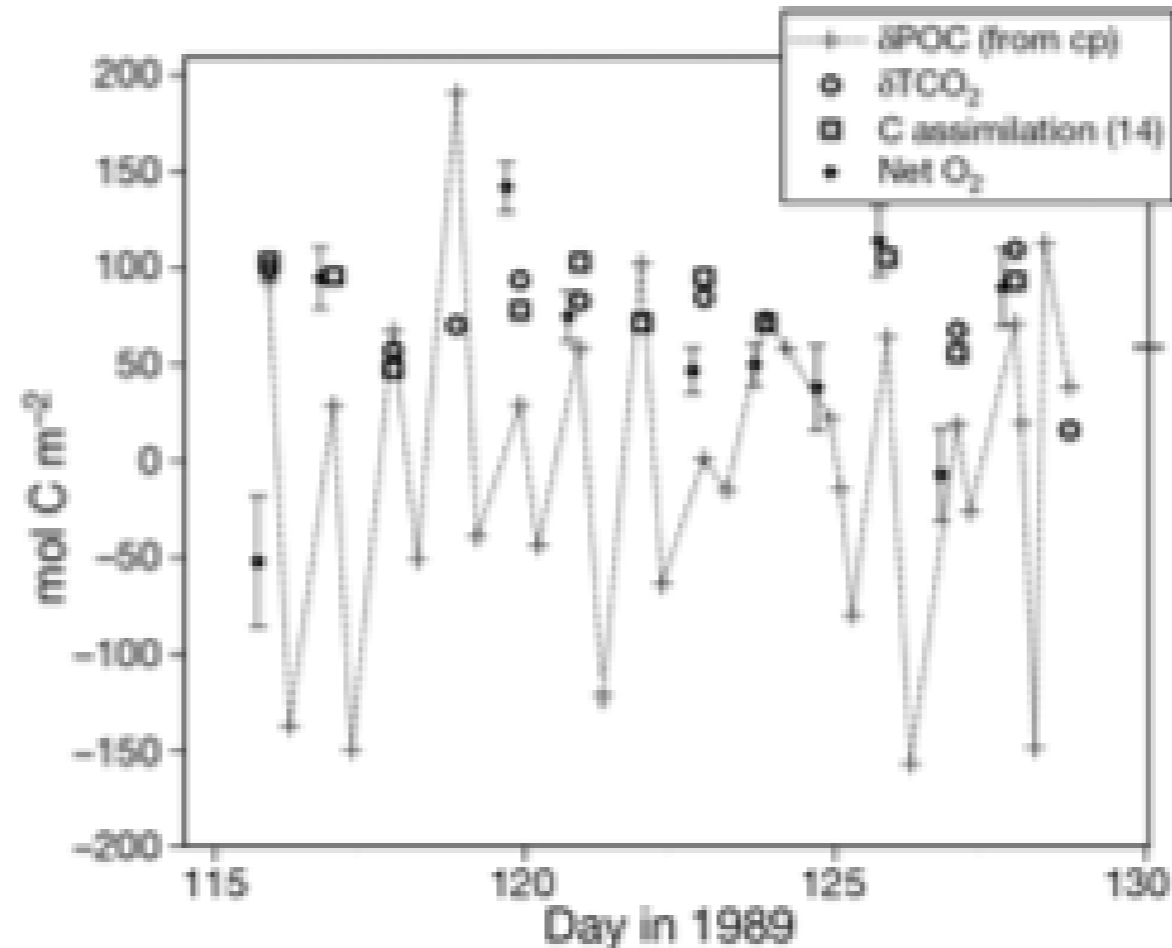


Fig. 4. Comparison of rates determined using incubation methods (C assimilation and net O_2 production) with rates determined from *in situ* changes (δTCO_2 , δPOC) in the mixed layer for the North Atlantic Bloom Experiment (NABE) in 1989 (from Marra 2002). The low points in the δPOC data are rates of loss overnight. The horizontal line on the right y-axis indicates the mean of all productivity measurements.

Reproduced with permission from Blackwell Scientific

Marra, 2009

In Conclusion...

Both water column (in situ, oceanographic) and physiological (incubations) approaches have their advantages and disadvantages.

Water column methods give a number, useful for budgets and serve as a valuable check.

Incubations can show which organisms are photosynthesizing, and interactions among the plankton.

If the water column is highly variable, physically, both approaches will have problems